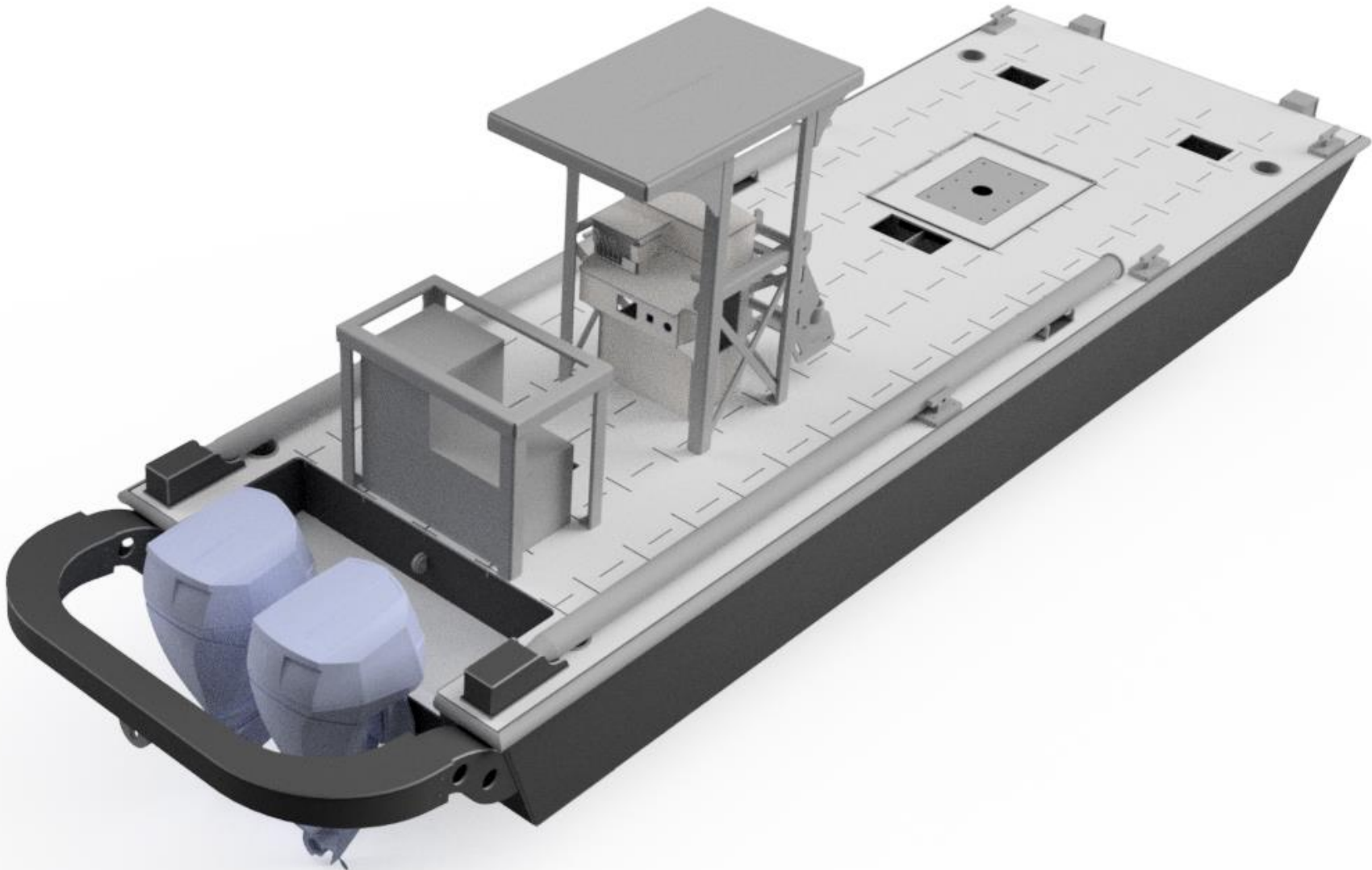


8' x 25' BARGE



Model: IMHBRG825

LEGACY_{HDPE} - Legacy Innovations LLC



WELCOME

Dear New Watercraft Owner,

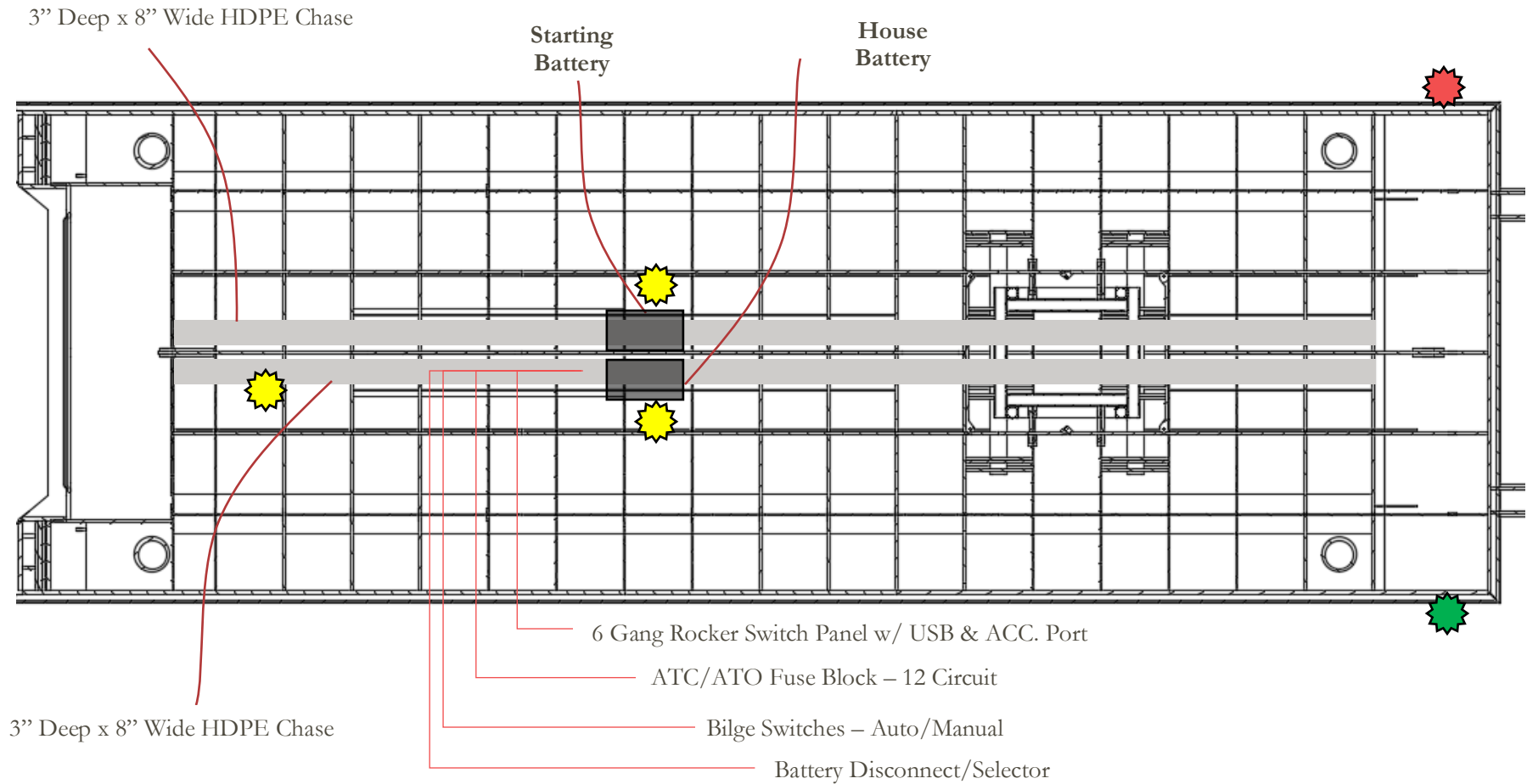
Here at Legacy Innovations LLC, we want to congratulate you on your recent marine vessel purchase. Legacy Innovations' vessels are set apart far above the standard in terms of innovation, durability, and functionality of a vessel to perform in the most leisure of adventures to the harshest environments imaginable. We have dredged up and subjected Legacy Innovations' vessels to the worst condition scenarios: ice, oyster bars, rock shelves, chemical spills, impact, and collision experiments to prove that a Legacy Innovations' vessel, because of the material we use, will withstand a lifetime. Our high-density polyethylene (HDPE) material is not only superior in UV, fatigue, chemical and abrasion resistance, but the smooth surface texture of HDPE allows any marine growth to be easily cleared off. Our HDPE material is 100% recycled material.

Although a Legacy Innovations vessel can take on anything you may come up against, we encourage you to read through the provided manual to ensure the utmost level of safety in the operation of your vessel, not only for the safety of yourself, but the safety of all our fellow operators who wish to explore this world's waterways.

The following manual is intended to provide a maintenance and diagnostic guide to the various systems on board your new vessel.

Electrical Systems

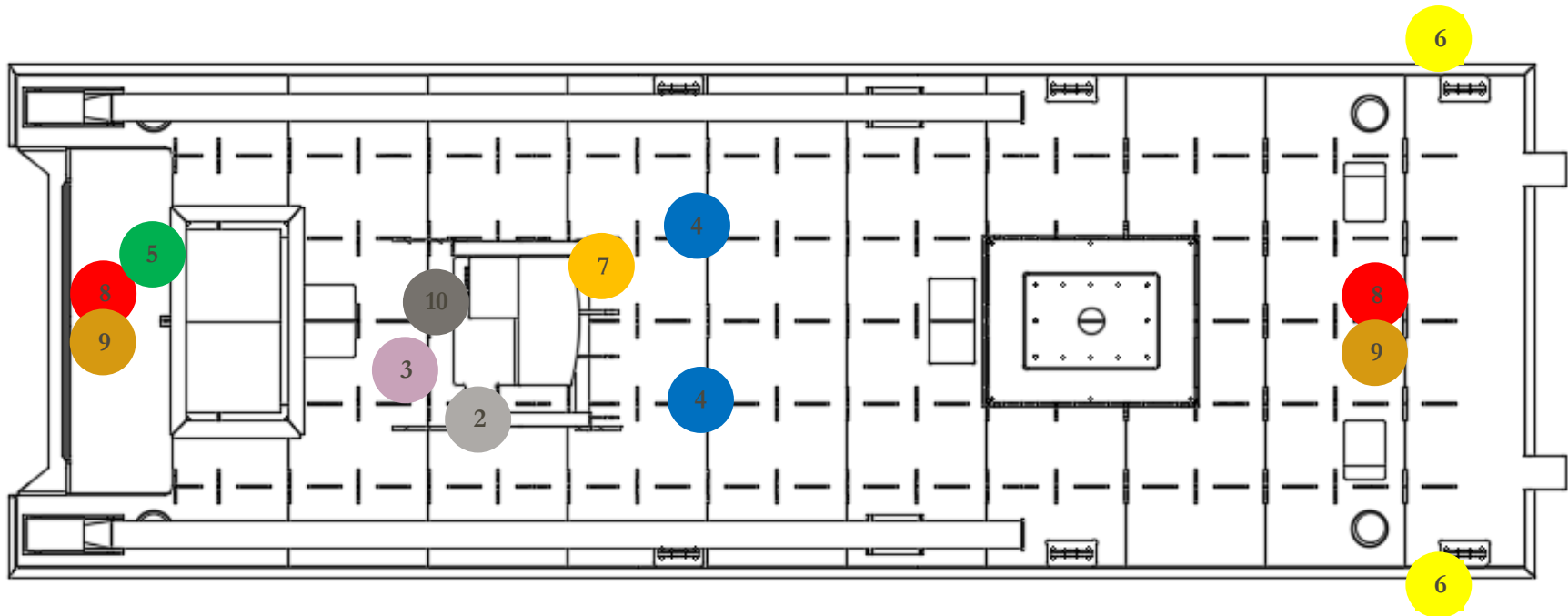
Component Layout



Wiring Layout

12VDC Wiring Harness

LEGEND	COLOR
1. GROUND	Black (12 ga.)
2. ANCHOR LIGHT	Gray (14 ga.)
3. FUEL SENDER	Violet (14 ga.)
4. DECK LIGHTS	Blue (14 ga.)
5. ACCESSORY	Green (14 ga.)
6. NAV. LIGHTS	Yellow (14 ga.)
7. HORN	Orange (14 ga.)
8. BILGE AUTO	White (14 ga.)
9. BILGE MANUAL	Brown (14 ga.)
10. 12V ACC. POWER	Red (14 ga.)



Wiring Schematic – See Appendix 1

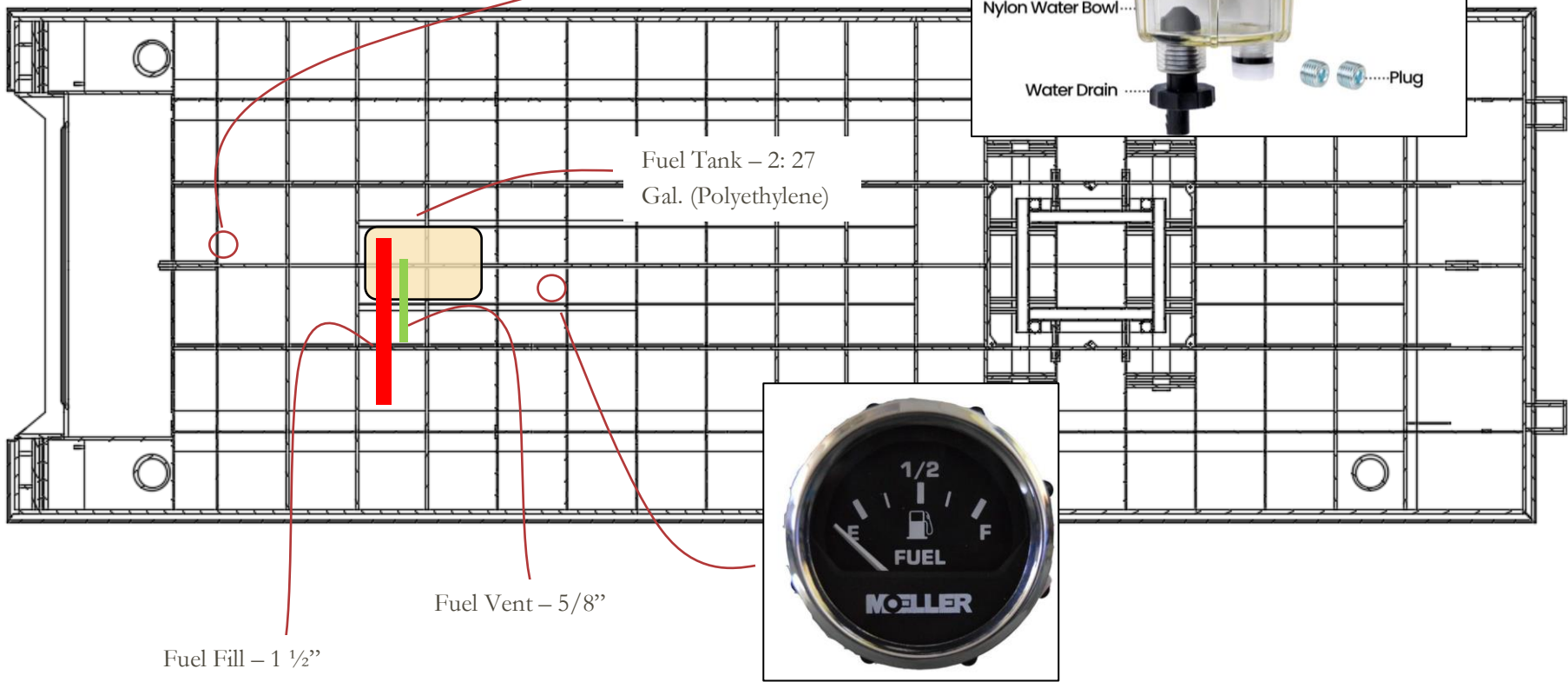
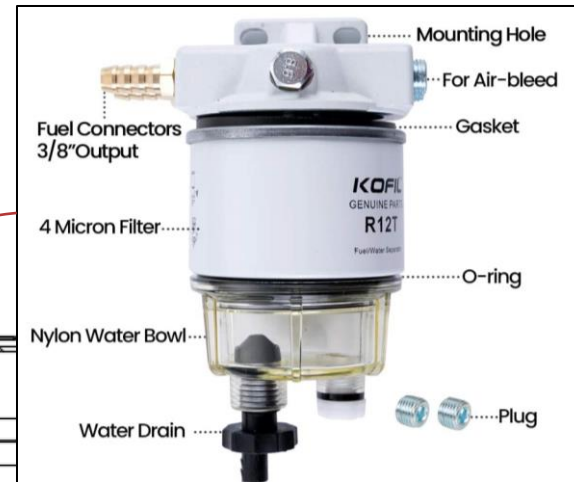
Fuel System

Tank

- Cross Linked Polyethylene - Impervious to corrosion and ethanol enhanced fuel
- Comply with ABYC, NMMA and U.S. Coast Guard regulations
- Used for gasoline or diesel

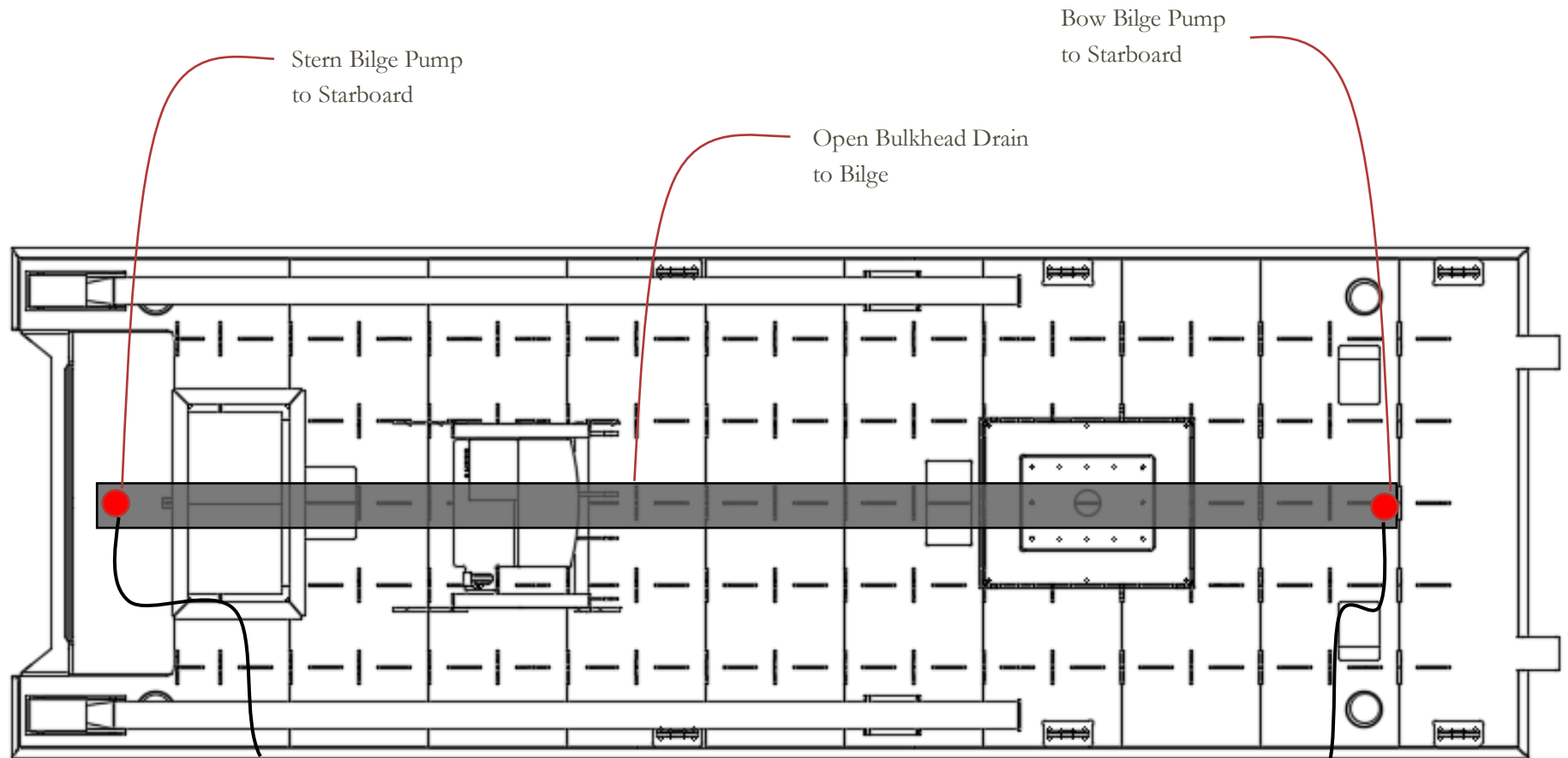
Standard 3/8" Primer Bulb & Fuel Filter/Water Separator

Standard Fuel Sending Unit & Console Fuel Gauge



Drainage

- Bow & Stern 12V – 1,200 GPM Bilge Pump
- Console Mounted Bilge Switches (Auto/Manual)





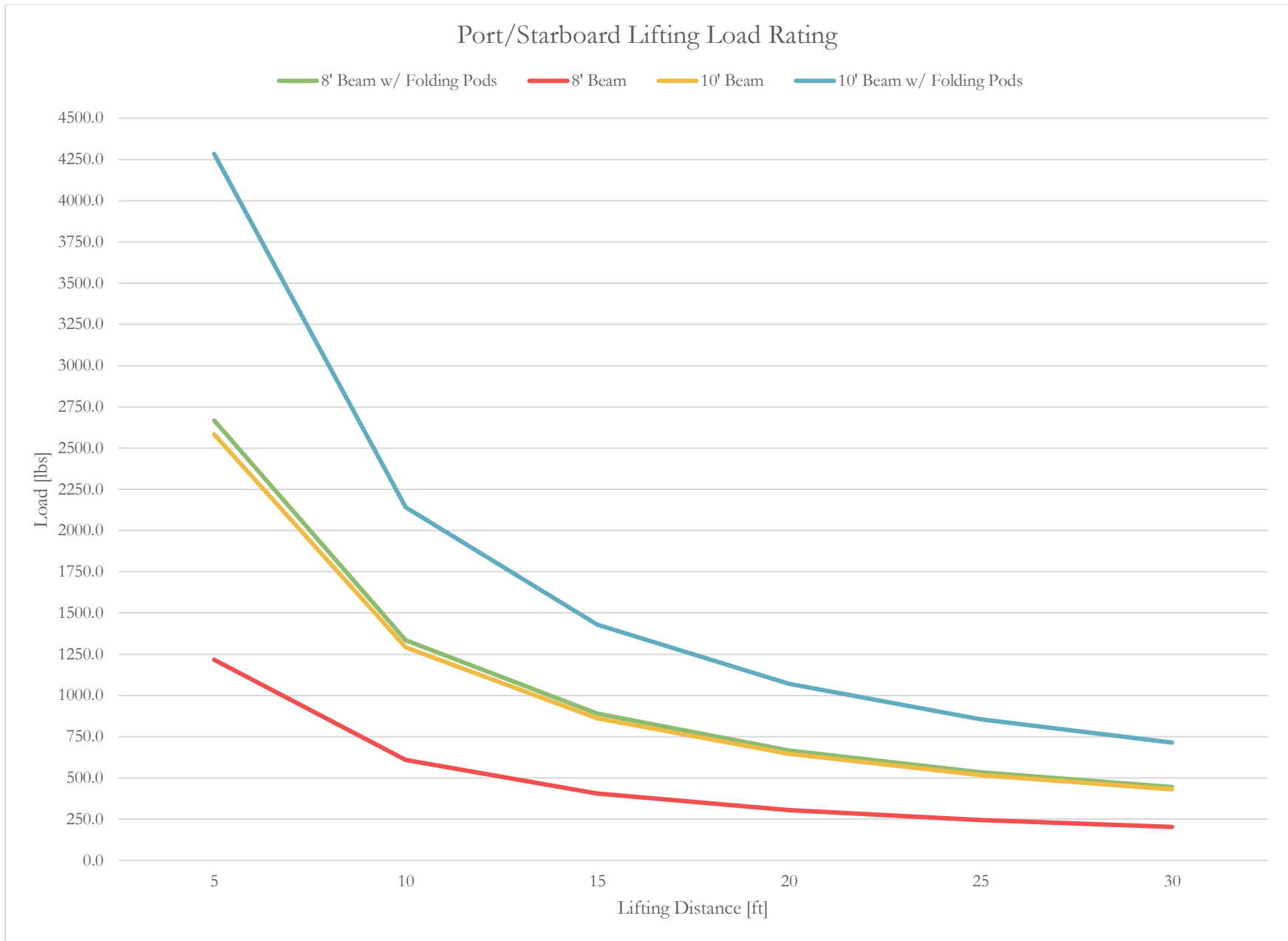
Accessories

Hydraulic Knuckle Boom – Amco Veba 804S

- Max. Lifting Capacity – See Attached Loading Diagrams
- GX630 Honda Marine Power Unit (5.3G/3700P)
- A18 Dinamic Oil winch [1760 lbs. bare drum line pull] – 100 ft.

Stern (Port & Starboard) Spud Poles (Appendix 6)

- Vertical Lift by Crane
- Gravity Down – Appx. Weight: 250 lb. ea.
- 6” HDPE Spuds – Concrete & Rebar Reinforcement (Core Filled)
- Horizontal Storage Cradles

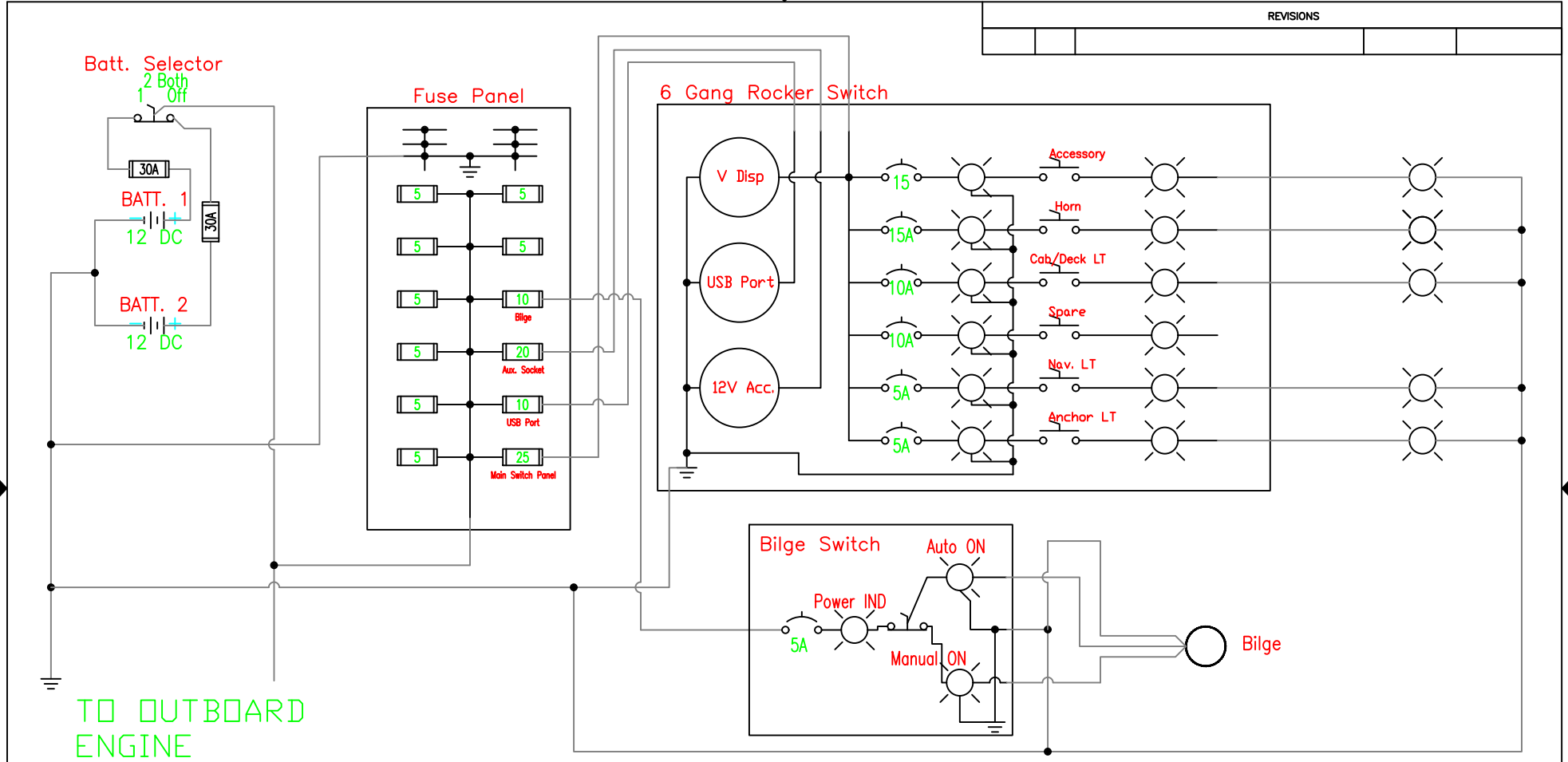




Warranties

Hull: See Legacy Innovations Warranty Policy

Accessories: See Legacy Innovations Extended Warranty Policy



REVISIONS			

		Standard Wiring Schematic		
		SIZE	FSCM NO	DRAWING NUMBER
SCALE		SHEET		



Amco Veba 804 / 904 RRS - 3 tm available with up to 4 hydraulic extensions



REACH @ CAPACITY

Configuration	Lbs	ft'in"	Lbs	ft'in"	Lbs	ft'in"	Lbs	ft'in"	Lbs	ft'in"
1S	2340	11'11"	1700	16'4"	1210	21'2"				
2S	2180	12'0"	1570	16'6"	1210	21'0"	*930	25'9"		
3S	2050	12'4"	1430	16'10"	1100	21'4"	900	25'9"	*710	30'7"
4S	1920	12'8"	1320	17'2"	990	21'7"	790	26'1"	660	30'7"
										*530

* Manually extendable extension optional

SPECIFICATIONS	1S	2S	3S	4S
Number of Extensions	1-Hydraulic	2-Hydraulic	3- Hydraulic	4- Hydraulic
Crane Rating (ft. lbs.)	27,800 (4 tm)	27,800 (4 tm)	27,800 (4 tm)	27,800 (4 tm)
Max. Horizontal Reach - hydraulic	16'4"	21'0"	25'9"	30'7"
Max. Vertical Reach - hydraulic	25'7"	30'6"	34'9"	39'5"
Max. Capacity (lbs.)	1700	1210	900	660
Crane Weight (lbs.)	1570	1680	1790	1880
Crane Dimensions	84"x73"x23"	84"x73"x23"	84"x73"x23"	84"x73"x23"
Mounting Space	7'1"x 6'x1'10"	7'1"x 6'x1'10"	7'1"x 6'x1'10"	7'1"x 6'x1'10"
Slewing Angle (degrees)	380	380	380	380
Oil Tank Capacity (gallons)	9.3	9.3	9.3	9.3
Max. Oil Flow (gpm)	4.3	4.3	4.3	4.3
Max. Working Pressure (psi)	3263	3263	3263	3263
Stabilizer Extension	10'0"	10'0"	10'0"	10'0"

STANDARD FEATURES

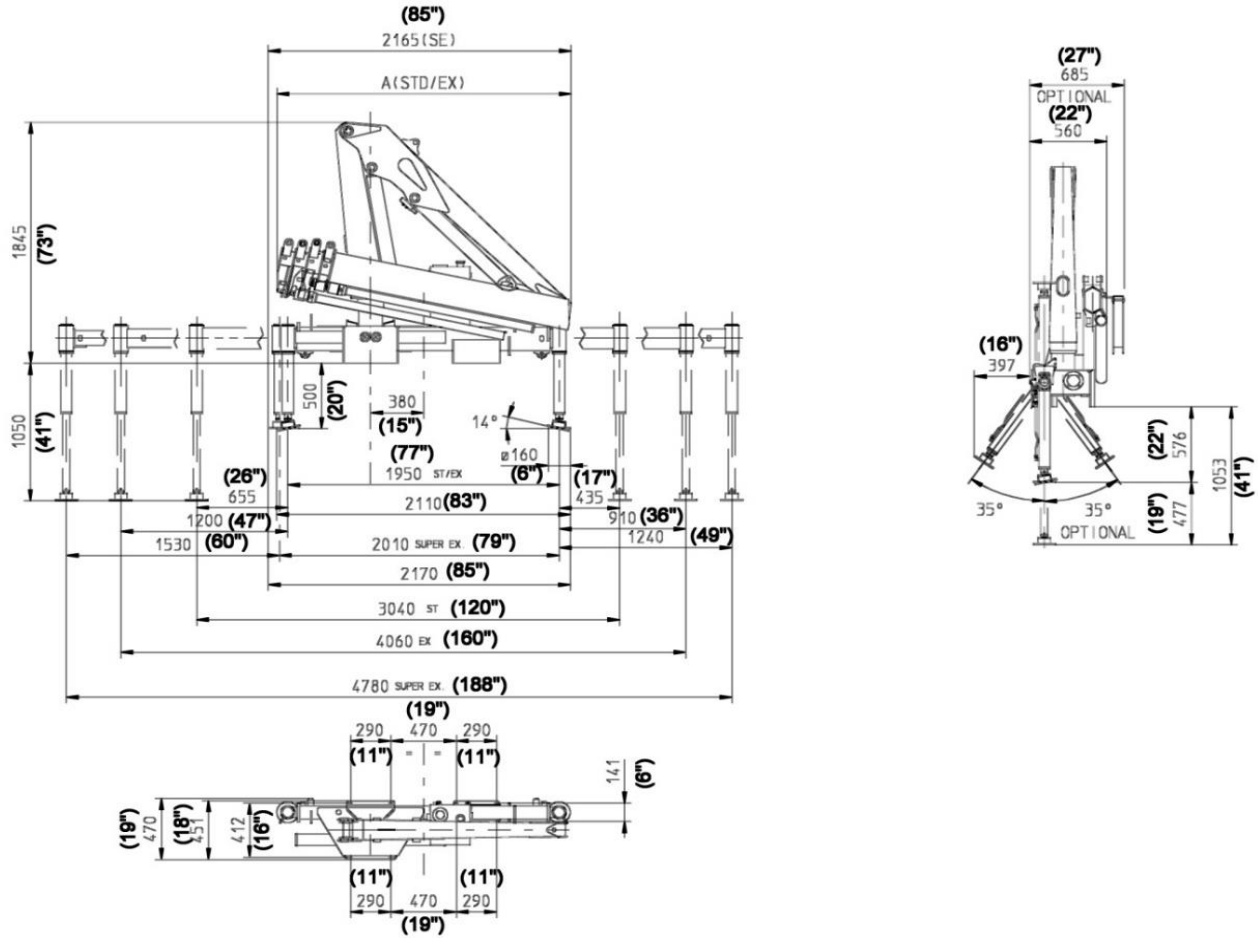
- Dual side controls - except with remote
- Hexagonal extension cylinders
- Sliding pads on telescopic extensions
- Flanged Valves
- Self lubricating bushings
- Oil tank
- Din and JIC fittings
- Designed in accordance with EN 12999
- Fatigue test classifications: B3
- Rack and pinion rotation
- Manually extendable stabilizers
- One year warranty

ACCESSORIES

- Extra side extension of stabilizers
- Extra valve function for winch
- Optional load limiting device
- Manual extensions
- RRS radio remote
- Stabilizers with hydraulic extensions
- Extra function to boom tip for accessories
- Turing stabilizers
- Winch
- Winch plate

DIMENSIONS

804 / 904 4S



	A
1S	2100
2S	2100
3S	2100
4S	2115

Rev.06/2014

2 / 30

SPECIAL FEATURES

*904 Model Includes



Radio Remote Control

The operator can control the crane with high precision proportional levers in every position, and in doing so, can supervise the loading and unloading operations. That means a time savings and greater safety. The operator can also control the truck engine start, stop and accelerator with the remote control. All of the remote controls used by AMCO VEBA have an identification code and are shielded from electro-magnetic fields and from external radio signals.